

Lina 55 s

Data sheet

Details

- Fireplace insert, open on one side
- 5545 – Height 45 cm
5551 – Height 51 cm
5557 – Height 57 cm
- Self-closing door
- Adjustable lower air washing
- Standard fire box inner lining: white smooth chamotte
- High-grade cast-iron dome, all parts can be moved, adjustable between 0 – 90°
- Overall height can be simply and quickly adjusted
- Easy to dismantle for transport

Technical data

Nominal heat output	7 kW
Thermal output range	3.4 – 7.4 kW
Efficiency	>80%
Insulation thickness (with wall that does not need to be protected) (based on SILCA® 250KM)	60 mm
Combustion air connector	Ø 125 mm
Recommend length of logs	33 cm
Weight	200 – 220 kg
Heat distribution through the viewing window	30%
Heat distribution, convective output	70%

Data for chimney sweep according to DIN EN 13384 (closed operation)

Triple values with nominal heat output

Flue gas mass flow	6.4 g/s
Flue gas temperature	260 °C
Required delivery pressure	12 Pa

Triple values for calculating ceramic flues (wood fuel)

Firing power	18.2 kW
Flue gas mass flow	15.1 g/s
Flue gas temperature upstream of the connecting surface	335 °C
Required delivery pressure at the flue gas connector	15 Pa
Combustion air requirement	63.9 m³/h
Recommended flue length ¹	1.7 m

Data for closed design

Minimum heat-emitting surface ²	3.6 m²
--	--------

¹The information regarding flue lengths is a recommendation and based on the calculation in accordance with TROL 2022 chapter 15. The calculation is based on a medium-heavy design and a flue ratio of 360 cm².

²Average value based on the storage time. Dependent on the material properties and the construction thickness. Mean specific heat distribution = approx. 500 W/m²

There may be modifications to the colour and technical details caused by ongoing developments; subject to errors and omissions. Dated: 01/2024

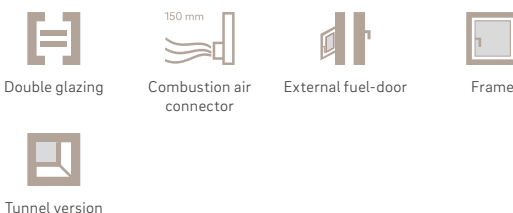


Lina 55 with hinged front

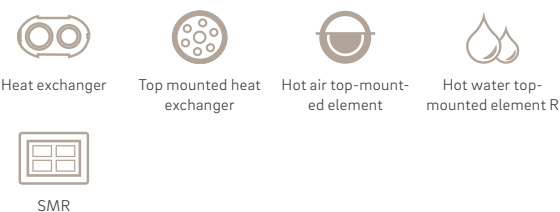
Standard



Optional



Accessories



Energy efficiency class in accordance with (EU) 2015/1186



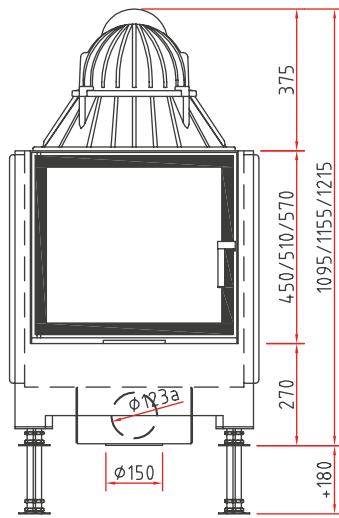
1. Federal Emissions Control Ordinance Stage 2



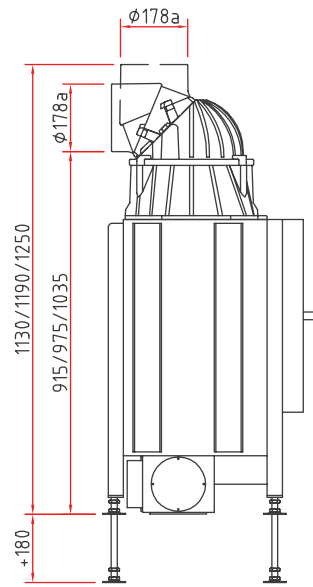
Lina 55 s

Dimensional drawing

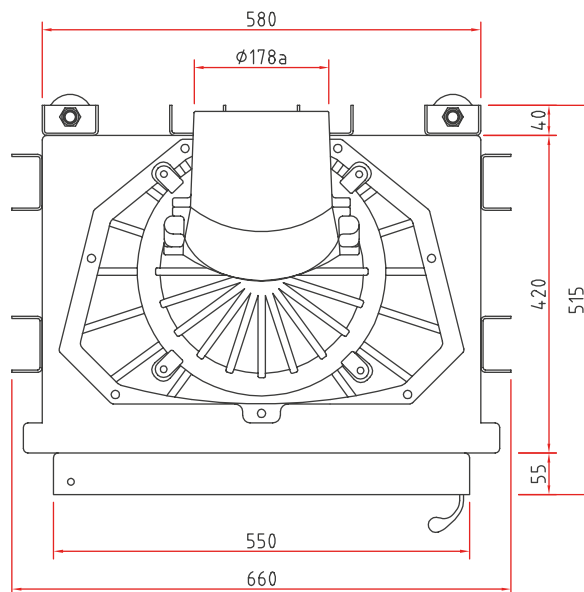
Front view, scale 1:20



Side view, scale 1:20



Top view, scale 1:10



Product data sheet

Regulation (EU) 2015/1186 supplementing Directive 2010/30/EU

	Lina 55 s/h, Lina TV 55 s/h
Supplier's name:	Camina & Schmid Feuerdesign und Technik GmbH & Co. KG
Supplier's model identifier:	Lina 55 s/h, Lina TV 55 s/h
Energy efficiency class:	A+
Direct heat output (kW)	7,0
Indirect heat output (kW):	–
Energy efficiency index (EEI):	109,0
Energy efficiency at nominal heat output (%):	82,1
Notes for specific precautions, installation or maintenance:	Please note the reference in the assembly instructions and operating manuals!

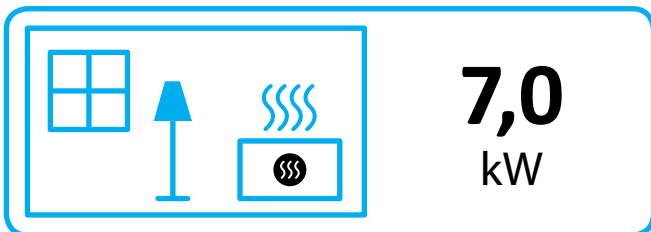
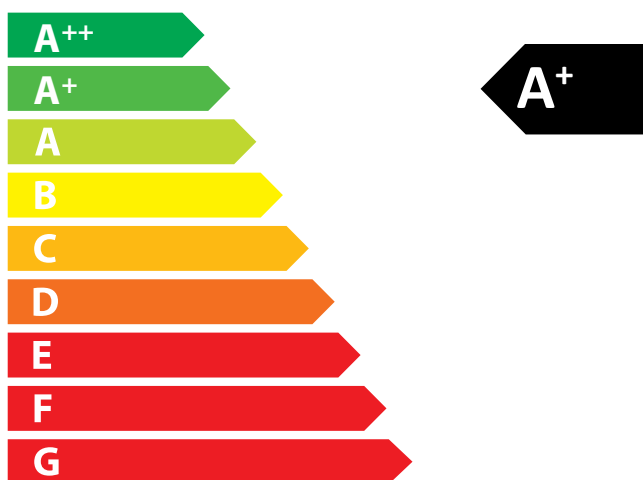
There may be modifications to technical details caused by ongoing developments; subject to errors and omissions. Dated: 11/2021



ENERG
енергия · ενέργεια



Camina  Schmid Lina 55 s/h, Lina TV 55 s/h



ENERGIA · ЕНЕРГИЯ · ΕΝΕΡΓΕΙΑ · ENERGIJA · ENERGY · ENERGIE · ENERGI

2015/1186