

Pano 67 s

Data sheet

Details

- Fireplace insert, open on one side, Front: Panorama
- 6745 – Height 45 cm
6751 – Height 51 cm
6757 – Height 57 cm
- Self-closing door
- Adjustable lower air washing
- Standard fire box inner lining: smooth beige chamotte
- High-grade cast-iron dome, all parts can be moved, adjustable between 0 – 90°
- Overall height can be simply and quickly adjusted
- Easy to dismantle for transport



Pano 67 with hinged front

Technical data

- | | |
|---|--------------|
| • Nominal heat output | 9 kW |
| • Thermal output range | 3,3 – 8,7 kW |
| • Efficiency | >78 % |
| • Insulation thickness (with wall that does not need to be protected) (based on SILCA® 250KM) | 60 mm |
| • Combustion air connector | Ø 125 mm |
| • Recommend length of logs | 33 cm |
| • Weight | 200 – 220 kg |
| • Heat distribution through the viewing window | 35 % |
| • Heat distribution, convective output | 65 % |

Data for chimney sweep according to DIN EN 13384 (closed operation)

Triple values with nominal heat output

- | | |
|------------------------------|---------|
| • Flue gas mass flow | 7,6 g/s |
| • Flue gas temperature | 340 °C |
| • Required delivery pressure | 12 Pa |

Triple values for calculating ceramic flues (wood fuel)

- | | |
|---|-------|
| • Firing power | – |
| • Flue gas mass flow | – |
| • Flue gas temperature upstream of the connecting surface | – |
| • Required delivery pressure at the flue gas connector | – |
| • Combustion air requirement | – |
| • Recommended flue length ¹ | 1,7 m |

Data for closed design

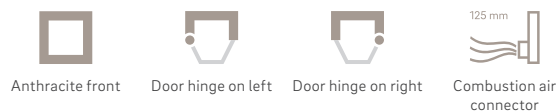
- | | |
|--|--------------------|
| • Minimum heat-emitting surface ² | 4,2 m ² |
|--|--------------------|

¹The information regarding flue lengths is a recommendation and based on the calculation in accordance with TROL 2022 chapter 15. The calculation is based on a medium-heavy design and a flue ratio of 360 cm².

²Average value based on the storage time. Dependent on the material properties and the construction thickness. Mean specific heat distribution = approx. 500 W/m²

There may be modifications to the colour and technical details caused by ongoing developments; subject to errors and omissions. Dated: 01/2024

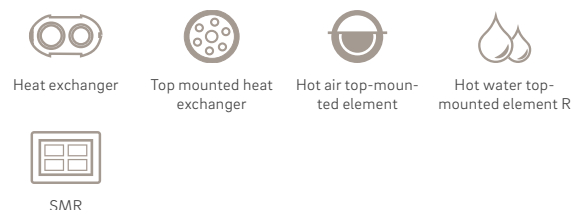
Standard



Optional



Accessories



Energy efficiency class in accordance with (EU) 2015/1186



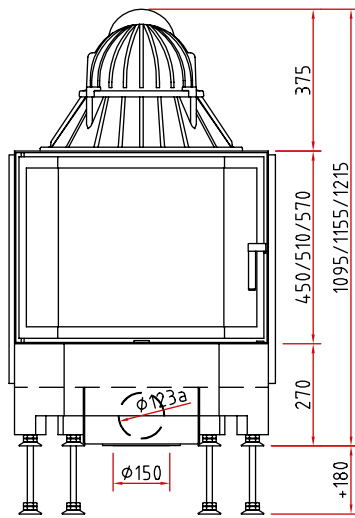
1. Federal Emissions Control Ordinance Stage 2



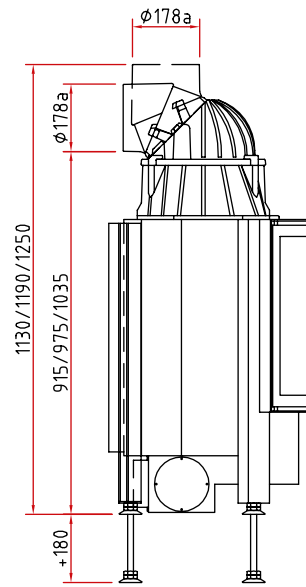
Pano 67 s

Dimensional drawing

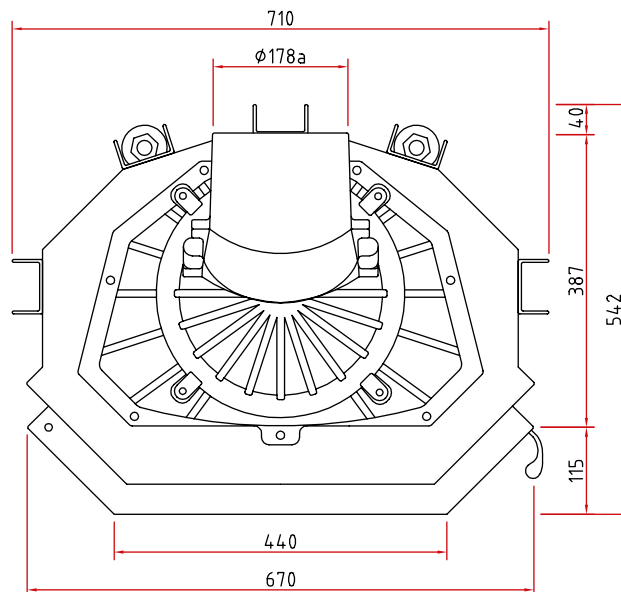
Front view, scale 1:20



Side view, scale 1:20



Top view, scale 1:10



Product data sheet

Regulation (EU) 2015/1186 supplementing Directive 2010/30/EU

	Pano 67 s/h
Supplier's name:	Camina & Schmid Feuerdesign und Technik GmbH & Co. KG
Supplier's model identifier:	Pano 67 s/h
Energy efficiency class:	A
Direct heat output (kW)	9,0
Indirect heat output (kW):	–
Energy efficiency index (EEI):	105,0
Energy efficiency at nominal heat output (%):	79,3
Notes for specific precautions, installation or maintenance:	Please note the reference in the assembly instructions and operating manuals!

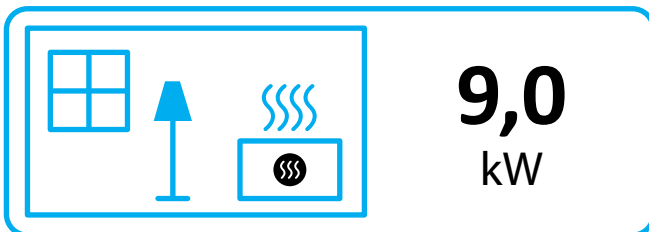
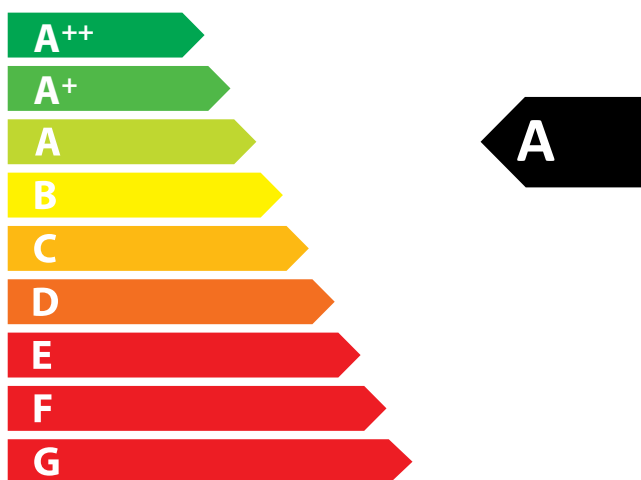
There may be modifications to technical details caused by ongoing developments; subject to errors and omissions. Dated: 11/2021



ENERG
енергия · ενέργεια



Camina  Schmid Pano 67 s/h



ENERGIA · ЕНЕРГИЯ · ΕΝΕΡΓΕΙΑ · ENERGIJA · ENERGY · ENERGIE · ENERGI

2015/1186